

# Sabroe ChillPAC chillers

Extremely compact packaged ammonia chillers based on reciprocating compressors, with a 100–1400 kW capacity range

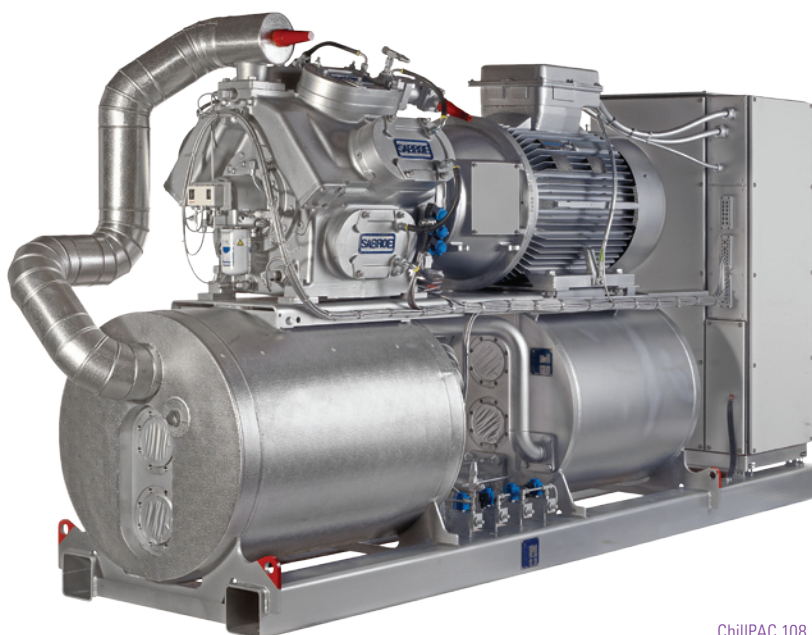
ChillPAC ammonia-based chillers are designed from the outset to achieve an ultra-compact format, so narrow that it can even pass through a normal doorway.

The fully integrated design, with an extra-compact shell-and-plate evaporator/condenser, oil separator and control system all built in, means ChillPAC units provide exceptional refrigeration capacity while only taking up a minimum of space and taking full advantage of the many different models of ultra-reliable Sabroe reciprocating compressors.

ChillPAC chillers are ideal in installations where there is only limited space, and where there are restrictions on the refrigerant charge used.

## Range

There are 15 different models in the standard ChillPAC range, with capacities ranging from 100 kW to 1400 kW.



ChillPAC 108

Advantages	Benefits
Factory-assembled, pre-tested packaged units	Easy pre-commissioning makes installation and running-in both faster and cheaper. Factory acceptance tests (FAT) available as an option
Exceptionally compact design and fully integrated configuration results in less than half the footprint of bespoke chiller designs	Major savings on both weight and space, resulting in lower installation costs. Much less need for expensive separate machinery rooms
Indirect cooling and uncomplicated flooded evaporating system, using natural ammonia (R717) only	Greater safety and outstanding reliability
Exceptional COP and outstanding part-load performance	Greater cooling effect from a smaller refrigerant charge
Refrigerant charge 50% smaller than with conventional chillers, because of special condenser/evaporator design	Higher output per unit kW/kg refrigerant, lower unit cost and lower installation costs

## Optional equipment

- Variable-speed drive
- Soft-starter or Y/D starter
- De-superheater
- Sub-cooler
- External condenser
- Control panel mounted separately



**Water chillers (Water: inlet 12°C, outlet 7°C)**

Type	Cooling capacity kW	E-motor kW	R717 charge kg	Dry weight kg	Dimensions in mm			Sound level dB(A)
					L	W	H	
CPAC 104 S-A	233	45	14	2301	2900	1000	2000	78
CPAC 104 L-A	294	55	15	2410	2900	1000	2000	79
CPAC 106 S-A	346	75	17	2727	2900	1000	2000	79
CPAC 104 E-A	357	75	17	2652	2900	1000	2000	79
CPAC 106 L-A	440	90	21	2950	2900	1000	2000	80
CPAC 108 S-A	464	90	22	3060	2900	1000	2000	80
CPAC 106 E-A	536	110	24	3225	3100	1000	2000	81
CPAC 108 L-A	588	110	26	3526	3100	1000	2000	82
CPAC 112 S-A	690	132	29	4315	4000	1000	2200	82
CPAC 108 E-A	715	132	30	3880	3300	1000	2000	82
CPAC 112 L-A	878	160	36	4738	4500	1000	2200	83
CPAC 116 S-A	921	200	37	5044	4500	1000	2200	83
CPAC 112 E-A	1066	200	41	5196	4600	1000	2200	83
CPAC 116 L-A	1167	250	45	5556	4700	1000	2200	83
CPAC 116 E-A	1398	315	49	5878	5000	1000	2200	84

**Brine chillers (Ethylene glycol 30%: inlet -4°C, outlet -8°C)**

Type	Cooling capacity kW	E-motor kW	R717 charge kg	Dry weight kg	Dimensions in mm			Sound level dB(A)
					L	W	H	
CPAC 104 S-C	116	37	13	2253	2700	1000	2000	78
CPAC 104 L-C	150	55	15	2378	2900	1000	2000	79
CPAC 106 S-C	172	55	15	2505	2900	1000	2000	79
CPAC 104 E-C	185	75	17	2586	2900	1000	2000	79
CPAC 106 L-C	222	75	18	2701	2900	1000	2000	80
CPAC 108 S-C	227	75	18	2766	2900	1000	2000	80
CPAC 106 E-C	272	90	20	2866	2900	1000	2000	80
CPAC 108 L-C	295	110	22	3091	3100	1000	2000	82
CPAC 112 S-C	339	110	24	3696	3800	1000	2200	82
CPAC 108 E-C	363	132	25	3523	3300	1000	2000	82
<b>CPAC 112 L-C</b>	<b>440</b>	<b>160</b>	<b>29</b>	<b>4290</b>	<b>4200</b>	<b>1000</b>	<b>2200</b>	<b>83</b>
CPAC 116 S-C	450	160	29	4390	4200	1000	2200	83
CPAC 112 E-C	544	200	35	4733	4300	1000	2200	83
CPAC 116 L-C	586	200	37	4898	4300	1000	2200	83
CPAC 116 E-C	718	250	43	5322	4300	1000	2200	83

Condenser: water inlet 30°C, outlet 35°C  
 Motor: 3 x 400V, 50 Hz, 1460 rpm  
 The above data are only valid for the stated temperatures and operating conditions.

Capacities are nominal.  
 Sound pressure levels in free field. All sound measuring has been carried out according to ISO 9614-2 at a distance of 1 m.

**Compliance**

All Sabroe chiller units are fully compliant with appropriate major international design codes and the specifications laid down by the most common classification societies.  
 Approval in accordance with other technical requirements, specific national legislation or other classification societies' requirements is available on request.

All information is subject to change without notice.

Johnson Controls Denmark ApS · Sabroe Factory  
 Christian X's Vej 201 · 8270 Højbjerg · Denmark  
 Phone +45 87 36 70 00 · Fax +45 87 36 70 05  
 www.sabroe.com

